

Notes:

1. Please note the strong correlation between SCH, enrollments, and the number of faculty. Where the enrollments line is not visible, it is due to its matching the SCH line.
2. The number of majors for the spring semesters from 2012-2015 were not available.

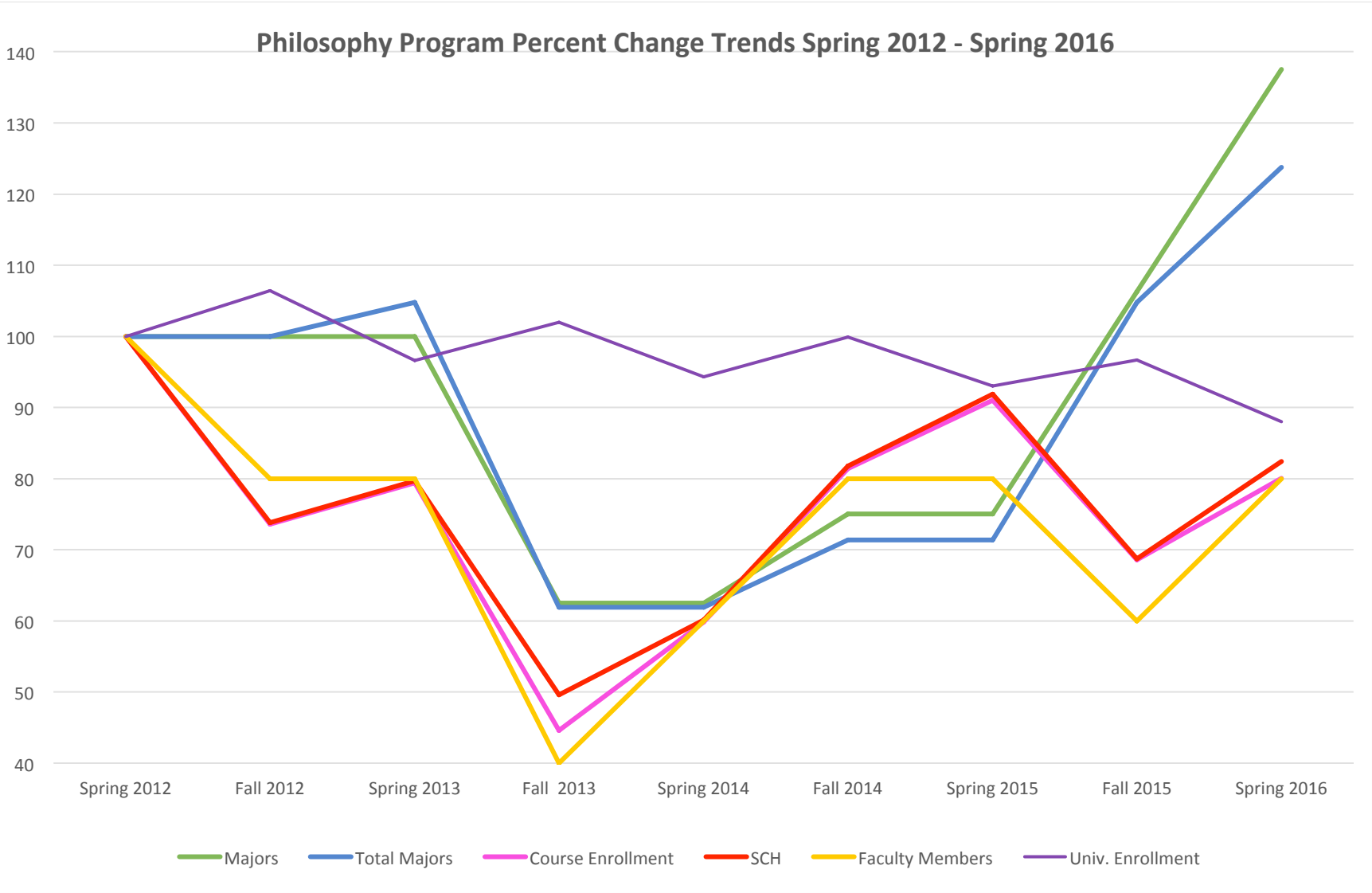
Data from which percent changes were calculated:

(Data from the Fall of 2011 is considered 100%.)

Fall 2011 – Fall 2015:

Philosophy	Fall 2011	Spring 2012	Fall 2012	Spring 2013	Fall 2013	Spring 2014	Fall 2014	Spring 2015	Fall 2015
Faculty Members	5 (100%)	5 (100%)	4 (80%)	4 (80%)	2 (40%)	3 (60%)	4 (80%)	4 (80%)	3 (60%)
Majors	16 (100%)	16 (100%)	16 (100%)	16 (100%)	10 (62.5%)	10 (62.5%)	12 (75%)	12 (75%)	17 (106.3%)
Total Majors	21 (100%)	21 (100%)	22 (104.8%)	22 (104.8%)	13 (61.9%)	13 (61.9%)	15 (71.4%)	15 (71.4%)	22 (104.8%)
SCH	1718 (100%)	1485 (86.4%)	1096 (63.8%)	1184 (68.9%)	736 (42.8%)	892 (51.9%)	1215 (70.7%)	1365 (79.4%)	1020 (59.4%)
Total Enrollment	576 (100%)	500 (86.8%)	368 (63.8%)	397 (68.9%)	223 (38.7%)	299 (51.9%)	407 (70.7%)	455 (78.9%)	343 (59.5%)
WIU total enrollment	12,554 (100%)	11,474 (91.4%)	12,205 (97.2%)	11,080 (88.3%)	11,707 (93.3%)	10,821 (86.2%)	11,458 (91.3%)	10,676 (85.0%)	11,094 (88.4%)

Philosophy Program Percent Change Trends Spring 2012 - Spring 2016



Data from which percent changes were calculated:

(Data from the Spring of 2012 is considered 100%.)

Spring 2012 – Spring 2016

Philosophy	Spring 2012	Fall 2012	Spring 2013	Fall 2013	Spring 2014	Fall 2014	Spring 2015	Fall 2015	Spring 2016
Faculty Members	5 (100%)	4 (80%)	4 (80%)	2 (40%)	3 (60%)	4 (80%)	4 (80%)	3 (60%)	4 (80%)
Majors	16 (100%)	16 (100%)	16 (100%)	10 (62.5%)	10 (62.5%)	12 (75%)	12 (75%)	17 (106.3%)	22 (137.5%)
Total Majors	21 (100%)	22 (104.8%)	22 (104.8%)	13 (61.9%)	13 (61.9%)	15 (71.4%)	15 (71.4%)	22 (104.8%)	26 (123.8%)
SCH	1485 (100%)	1096 (73.8%)	1184 (79.7%)	736 (49.6%)	892 (60.1%)	1215 (81.8%)	1365 (91.9%)	1020 (68.7%)	1224 (82.4%)
Total Enrollment	500 (100%)	368 (73.6%)	397 (79.4%)	223 (44.6%)	299 (59.8%)	407 (81.4%)	455 (91.0%)	343 (68.6%)	402 (80.4%)
WIU total enrollment	11,474 (100%)	12,205 (106.4%)	11,080 (96.6%)	11,707 (102.0%)	10,821 (94.3%)	11,458 (99.9%)	10,676 (93.0%)	11,094 (96.7%)	10,098 (88.0%)